

Using

Contents

- 1 Quick Guide
 - 1.1 Connecting to an FTP server
 - 1.1.1 Using the Quick Connect bar
 - 1.1.2 Using Site Manager
 - 1.1.3 Special case: Servers in LAN
 - 1.2 Navigating on the server
 - 1.3 Navigating on your machine
 - 1.4 Transferring files
- 2 Detailed Information Pages
- 3 File Transfer Notes
 - 3.1 Reducing simultaneous connections for incorrectly configured servers
- 4 Troubleshooting
 - 4.1 Re-registering the shell extension (Windows only)

Quick Guide

[\[edit\]](#)

This guide gives you a short overview on how to use FileZilla. By default you don't have to configure FileZilla, so you can start directly working with the program.

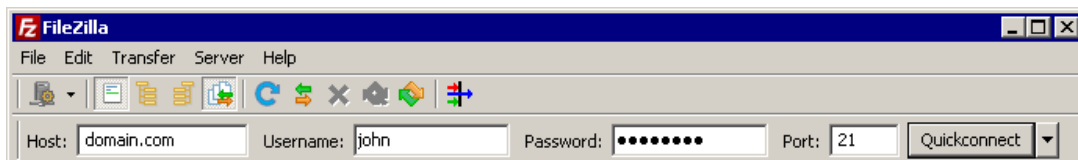
Connecting to an FTP server

[\[edit\]](#)

Using the Quick Connect bar

[\[edit\]](#)

To connect to an FTP server, enter the address of the server into the host field of the Quickconnect bar (i.e. domain.com - see image below). If it is a special server type like an SFTP server, add the protocol in front of the address. In case of an SFTP server, start the address with 'sftp://' (i.e. sftp://domain.com). Enter the port of the server into the port field if it is *not* the default port (21 for FTP, 22 for SFTP). If a username / password is required, enter it in the corresponding fields, otherwise the default *anonymous* logon will be used. Click on Quickconnect or press Enter to connect to the server.



Please notice that the Quick Connect is for... quick connections - so there is no way to edit the quick connections list which stores the last 10 entries. To store FTP server names you should use the Site Manager, instead.

Quick Connect is good for testing the login info before making a site manager entry. Once you connect, you can choose File -> "Copy current connection to Site Manager..." to make a permanent entry. It is usually best to check your login info with Quick Connect before making a permanent entry.

Using Site Manager

[\[edit\]](#)

You can use the FileZilla [Site Manager](#) to specify specific site parameters and connect to the targeted FTP site. The [Site Manager](#) allows you to store entries and configure more parameters than the Quick Connect allows.

Special case: Servers in LAN

[\[edit\]](#)

If the server you are connecting to is in your home LAN, then there is not an address (domain name) as you may know from the Internet. In LAN, you simply use the internal IP address of the server PC. In most cases the network name (computer name) will do, too. If the server is on the same PC as Filezilla, you can even use localhost or 127.0.0.1 as hostname.

NOTE: If you connect from the outside of your LAN this does not apply, you have to use the external (WAN) IP instead.

Navigating on the server

[\[edit\]](#)

After a successful connection attempt, a list of files and folders appears on the **right** side of the main window. The current folder is listed in the edit field on the top. Below you will see the remote directory tree and below that, the contents of the current remote folder. There are three ways to change the folder. First, you can double-click a folder in the file list. Second, you can change the current folder by clicking a folder in the directory tree. Last but not least, you can always enter the folder name into the edit field and press enter. You will notice a folder called "." displayed in virtually all directories. This folder allows you to go up to the parent directory of the current folder.



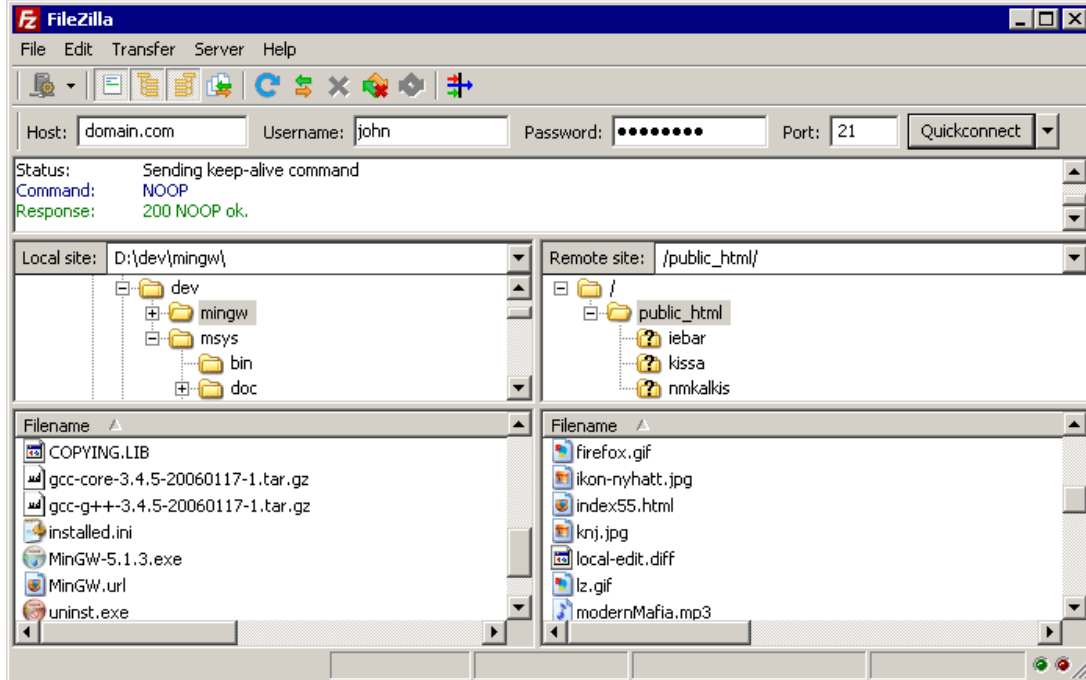
navigation

- [Main Page](#)
- [Community portal](#)
- [Recent changes](#)
- [Random page](#)
- [Help](#)
- [Donate](#)

search

toolbox

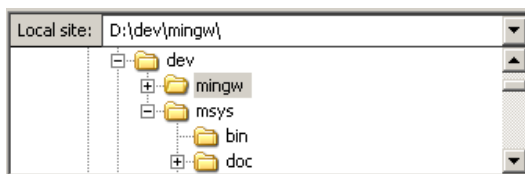
- [What links here](#)
- [Related changes](#)
- [Upload file](#)
- [Special pages](#)
- [Printable version](#)
- [Permanent link](#)



Navigating on your machine

[edit]

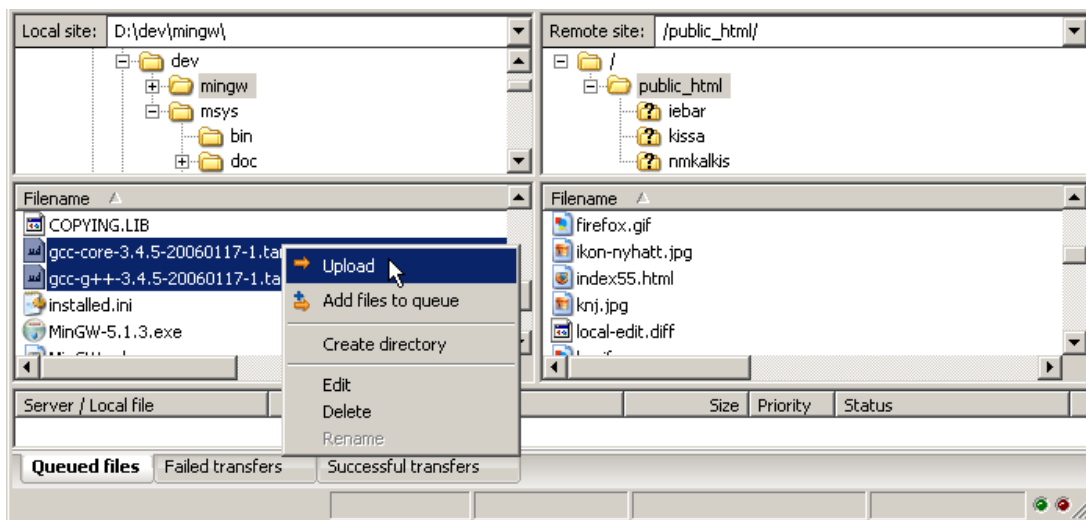
Navigating on your machine works almost like navigating on the server. The current local folder and the local directory tree are displayed on the **left** side of the main window by default.




Transferring files

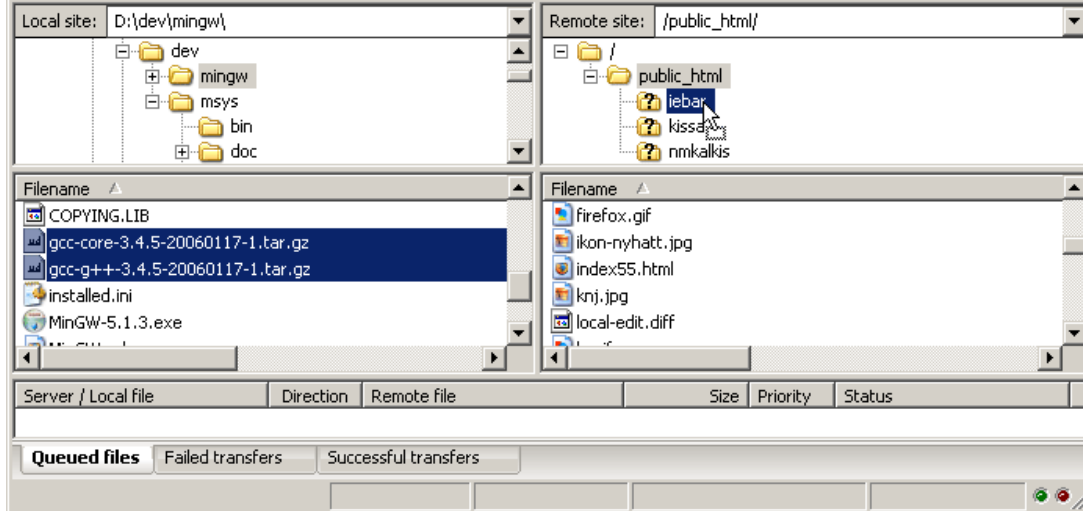
[edit]

You can upload or download a file by double-clicking on it. It will be added to the transfer queue and the transfer starts automatically. To transfer folders and/or multiple files, select them and right-click the selection. Then you can click on Upload/Download in the popup menu.



You can also drag the files from one side and drop them on the other side. To add files to the queue so that they will be transferred later, select them and click Add to Queue from the popup menu. You may also drag the files directly into the queue. Click on the  button on the toolbar to start the transfer.

Or, you can click on a file, then drag the file (a box is added to the arrow cursor) to the folder where you want to move it. The folder will be highlighted when you are over it. Let go of the mouse button and the file will be moved to the folder.



Detailed Information Pages

[\[edit\]](#)

Detailed information on other aspects of the FileZilla client can be found on the following pages:

- [Filename Filters](#)

File Transfer Notes

[\[edit\]](#)

FileZilla uses multiple FTP sessions. One session gets used purely to browse the server. The other sessions get used to do the file transfers. That way, you can always browse the server even during transfers.

For example, here is a simple car analogy: You order a pizza using your telephone (aka the browsing connection), then you hang up the telephone. Then the delivery man drives the pizza in his car to your location (the transfer connection). While the pizza is transferring, you can phone somebody else, like for example your garage because your own car is broken ;)

Reducing simultaneous connections for incorrectly configured servers

[\[edit\]](#)

If you get a 421 Too many connections from this IP (<number>) error, the FTP server is restricting your number of connections. There are even servers restricting it to one connection at a time.

The preferred solution would be to contact the server administrator and encourage him/her to configure the server correctly (FTP uses more than one connection by design!). But if you need access immediately, there is a workaround:

1. Open the Site Manager (File - Site Manager... or the first toolbar button)
2. Create an entry for that server, enter all details you know, the more precise, the better
3. Open the 'Transfer Settings' tab
4. Tick the 'Limit number of simultaneous connections' checkbox
5. Enter the desired limit into the 'Maximum number of connections' field

Now, if you connect using the Site Manager entry, connections will be limited.

Note: If you limit connections to 1 only, there is a major drawback: You cannot browse the server anymore while a transfer is in progress!

Troubleshooting

[\[edit\]](#)

Re-registering the shell extension (Windows only)

[\[edit\]](#)

Especially on Vista it can happen that Drag&Drop fails and you get an error message stating the shell extension doesn't work. In this case you may need to re-register it. Here's how:

1. Open a command prompt as administrator. This is important!

Start Menu - All Programs - Accessories: Right Click 'Command Prompt', select 'Run as administrator'

2. Navigate to the Filezilla program directory. Example:

```
cd "%Program Files\FileZilla FTP Client"
```

3. Re-register the shell extension.

Type 'regsvr32 fzshellext.dll' (without quotes of course)

4. If you have 64bit OS, you need to perform an additional step.

Type 'regsvr32 fzshellext_64.dll' (no quotes as well)

If you get the reply 'DllRegisterServer in ... succeeded.', you've done it (though you probably still need to reboot your computer).



This page was last modified on 6 July 2009, at 18:27. This page has been accessed 362,632 times.
Content is available under [GNU Free Documentation License 1.2](#). [Privacy policy](#) [About FileZilla Wiki](#)
Server sponsored by [Hetzner Online AG](#)

